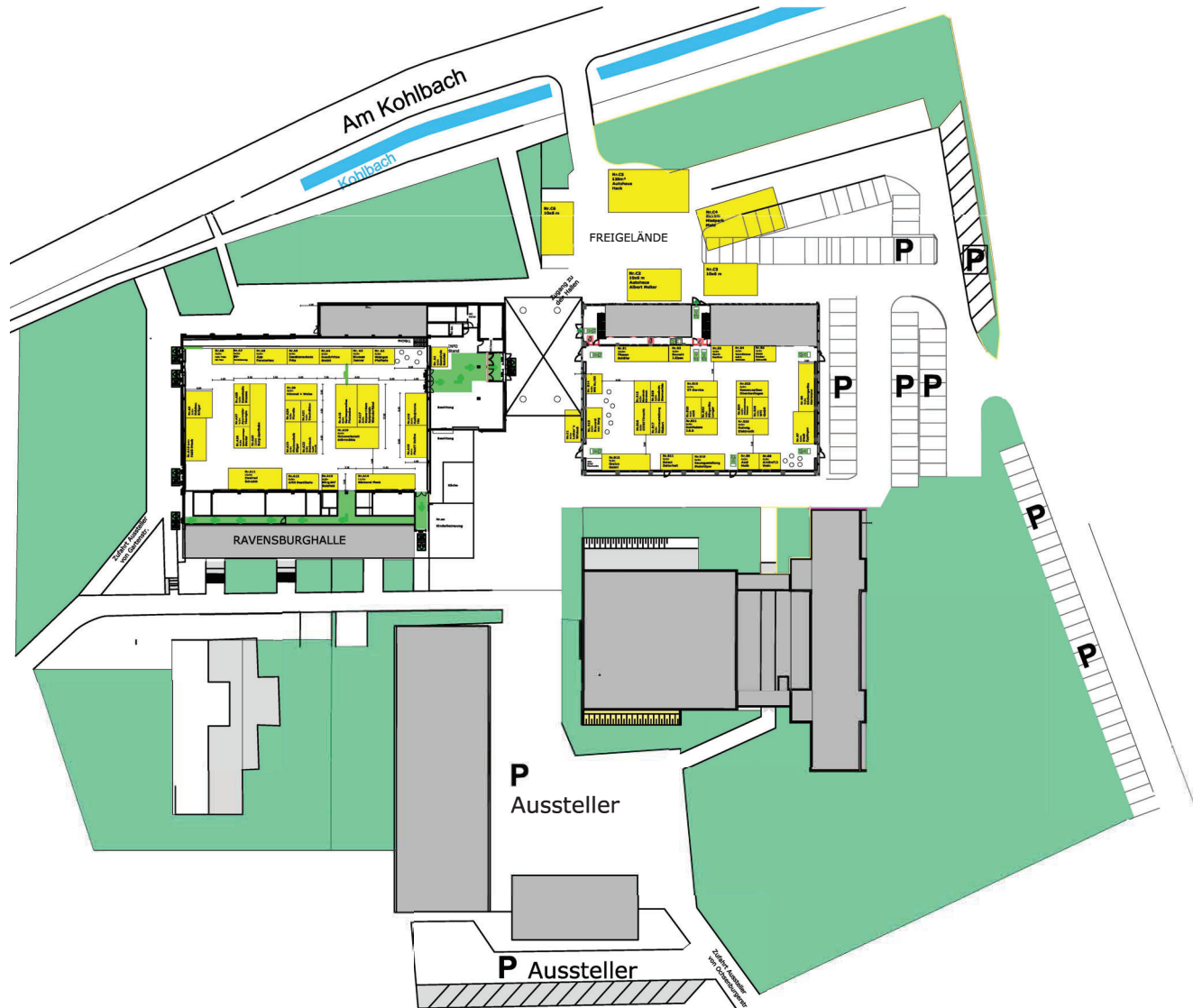
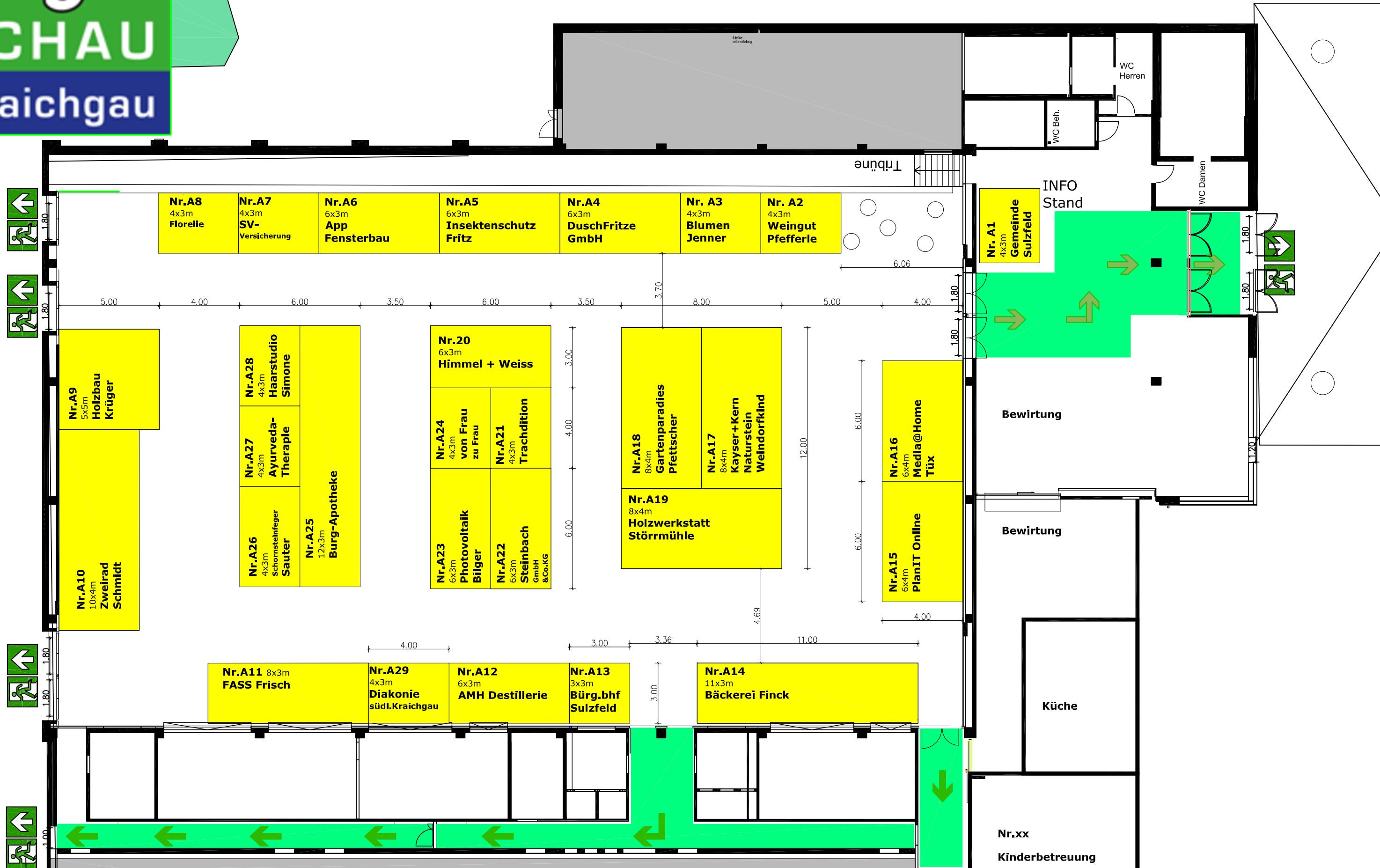


# Überblick Ausstellungsgelände

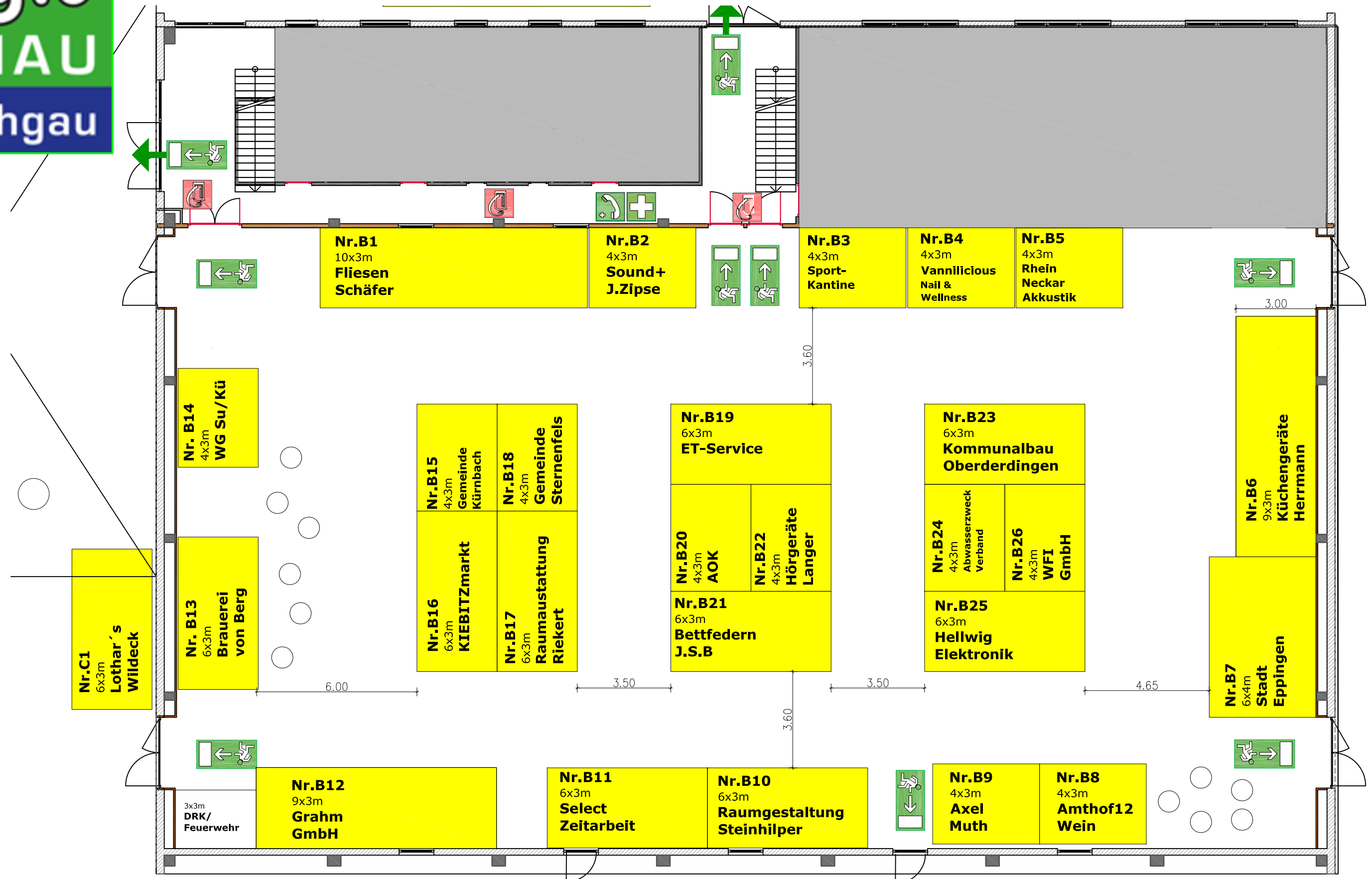




# Ravensburghalle Halle A

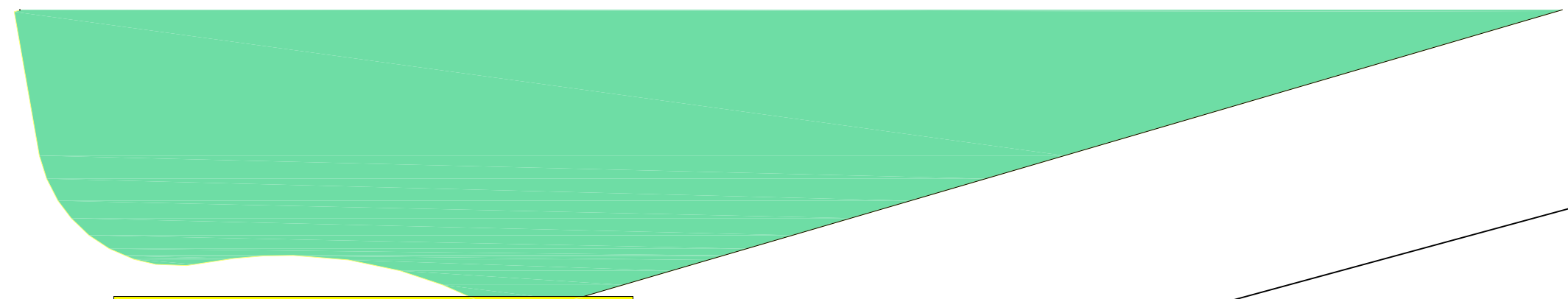


# Sparkassen-Sportpark - Halle B





# Freigelände Außen C



**Nr.C6**  
10x6 m  
**Jo Mehl**  
Land- und  
Gartentechnik

**Nr.C5**  
120m<sup>2</sup>  
Autohaus  
Hack

**Nr.C4**  
8x15m  
Mietpark  
Mehl

## FREIGELÄNDE

**Nr.C 9**  
Palmbräu  
Oldtimer

**Nr.C8**  
5x8 m  
Vöroka

Zugang zu  
den Hallen

**Nr.C2**  
10x6 m  
Autohaus  
Albert Melter

**Nr.C3**  
6x8 m  
DS-Design

**Nr.C7**  
10x6 m  
Stäbler  
Performance

**Nr.C10**  
Cuvee  
Weinkult

